

Walter Emerson Baum

American, 1884-1956

***Corn Field In Winter*, 1915**

Oil paint, Overall: 25 1/2 x 20 1/4 in. (64.8 x 51.4 cm)

Gift of Norfolk Society of the Arts

Chrysler Museum of Art, Norfolk, Va. 15.1.1



Adele Williams

American, 1868-1952

***Fishing Boats at Gloucester*, ca. 1900 - 1910**

Watercolor, gouache, and graphite drawing on laid paper,

Overall: 15 1/2 x 18 1/2 in. (39.4 x 47 cm)

Gift of the Norfolk Society of Arts

Chrysler Museum of Art, Norfolk, Va. 17.1.1



Ivan Gregorovitch Olinsky

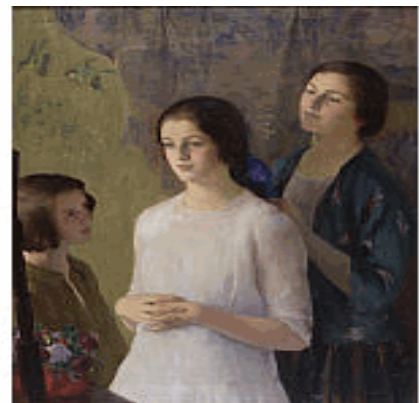
American, 1878-1962

***Adoration*, ca. 1919**

Egg tempera | Oil | Canvas, Overall: 40 x 32 in. (101.6 x 81.3 cm)

Gift of The Norfolk Society of Arts

Chrysler Museum of Art, Norfolk, Va. 26.2.2



T. Van Hieneman

Flower Market, 20th century

Oil on canvas, 36 x 29 in. (91.4 x 73.7 cm)

Overall, Frame: 37 3/4 x 45 1/4 x 3 in. (95.9 x 114.9 x 7.6 cm)

Gift of the Norfolk Society of Arts

Chrysler Museum of Art, Norfolk, Va. 30.2.1



Hermon Atkins MacNeil

1866-1947

The Sun Vow, modeled 1898-1899, cast ca. 1925

Bronze, 33 x 21 x 23 in. (83.8 x 53.3 x 58.4 cm)

Gift of the Norfolk Society of the Arts

Chrysler Museum of Art, Norfolk, Va. 32.6.1

© Estate of Hermon Atkins MacNeil



J. E. Boudin

American, active early 20th Century

Sailboats And A Tramp Steamer At Sunset, ca. 1910

Paper, Overall: 10 x 13 3/16 in. (25.4 x 33.5 cm)

Overall, Mat: 14 1/4 x 19 1/4 in. (36.2 x 48.9 cm)

Gift of the Norfolk Society of Arts

Chrysler Museum of Art, Norfolk, Va. 34.42.1



J. E. Boudin

American, active early 20th Century

The Smelter, ca. 1910

Paper, Overall: 10 x 7 in. (25.4 x 17.8 cm)

Overall, Mat: 14 1/4 x 19 1/4 in. (36.2 x 48.9 cm)

Gift of the Norfolk Society of Arts

Chrysler Museum of Art, Norfolk, Va. 34.42.2



J. E. Boudin

American, active early 20th Century

Shipping, ca. 1910

Paper, Overall: 4 1/8 x 9 1/8 in. (10.5 x 23.2 cm)

Overall, Mat: 14 1/4 x 19 1/4 in. (36.2 x 48.9 cm)

Gift of the Norfolk Society of Arts

Chrysler Museum of Art, Norfolk, Va. 34.42.3



J. E. Boudin

American, active early 20th Century

The Skow, ca. 1910

Paper, Overall: 6 x 8 in. (15.2 x 20.3 cm)

Overall, Mat: 14 1/4 x 19 1/4 in. (36.2 x 48.9 cm)

Gift of the Norfolk Society of Arts

Chrysler Museum of Art, Norfolk, Va. 34.42.4



J. E. Boudin

American, active early 20th Century

West Norfolk, ca. 1910

Paper, Overall: 6 3/8 x 8 in. (16.3 x 20.3 cm)

Overall, Mat: 14 1/4 x 19 1/4 in. (36.2 x 48.9 cm)

Gift of the Norfolk Society of Arts

Chrysler Museum of Art, Norfolk, Va. 34.42.5



J. E. Boudin

American, active early 20th Century

Norfolk Types, ca. 1910

Paper, Overall: 6 x 8 in. (15.2 x 20.3 cm)

Overall, Mat: 14 1/4 x 19 1/4 in. (36.2 x 48.9 cm)

Gift of the Norfolk Society of Arts

Chrysler Museum of Art, Norfolk, Va. 34.42.6



J. E. Boudin

American, active early 20th Century

Norfolk Types, ca. 1910

Paper, Overall: 11 1/8 x 8 in. (28.3 x 20.3 cm)

Overall, Mat: 14 1/4 x 19 1/4 in. (36.2 x 48.9 cm)

Gift of the Norfolk Society of Arts

Chrysler Museum of Art, Norfolk, Va. 34.42.7



J. E. Boudin

American, active early 20th Century

In The Bay, ca. 1910

Etching, Overall: 4 x 9 5/8 in. (10.2 x 24.4 cm)

Overall, Mat: 14 1/4 x 19 1/4 in. (36.2 x 48.9 cm)

Gift of the Norfolk Society of Arts

Chrysler Museum of Art, Norfolk, Va. 34.42.8



J. E. Boudin

American, active early 20th Century

The Bay From West Norfolk, ca. 1910

Paper, Overall: 7 1/8 x 10 in. (18.1 x 25.4 cm)

Overall, Mat: 14 1/4 x 19 1/4 in. (36.2 x 48.9 cm)

Gift of the Norfolk Society of Arts

Chrysler Museum of Art, Norfolk, Va. 34.42.9



J. E. Boudin

American, active early 20th Century

The Bridge To West Norfolk, ca. 1910

Paper, Overall: 8 x 9 1/8 in. (20.3 x 23.2 cm)

Overall, Mat: 14 1/4 x 19 1/4 in. (36.2 x 48.9 cm)

Gift of the Norfolk Society of Arts

Chrysler Museum of Art, Norfolk, Va. 34.42.10



Francis Luis Mora

American, 1874 - 1940

***Window Shopping*, 1934**

Oil on canvas, Overall: 25 x 30 in. (63.5 x 76.2 cm)

Overall, Frame: 29 1/2 x 34 5/8 in. (74.9 x 87.9 cm)

Gift of the Norfolk Society of Arts

Chrysler Museum of Art, Norfolk, Va. 35.12.1



Ann Golthwaite

***Military Tailors*, No Date**

Watercolor, Overall: 22 3/8 x 18 1/2 in. (56.8 x 47 cm)

Overall, Frame: 26 1/2 x 22 1/2 in. (67.3 x 57.2 cm)

Gift of the Norfolk Society of Arts

Chrysler Museum of Art, Norfolk, Va. 36.6.1



John E. Costigan

American, 1888 - 1972

***Cutting Fodder*, 1940-1941**

Etching, Overall: 7 7/8 x 11 7/8 in. (20 x 30.2 cm)

Overall, Mat: 19 x 14 7/8 in. (48.3 x 37.8 cm)

Gift of the Junior Committee, Norfolk Society of Arts

Chrysler Museum of Art, Norfolk, Va. 41.16.1



Anne Rogers Minor

American, 1864 - 1947

Seine Boats, ca. 1940

Oil on canvas, Overall: 12 x 16 3/4 in. (30.5 x 42.5 cm)

Overall, Frame: 16 x 20 1/4 in. (40.6 x 51.4 cm)

Gift of the Junior Committee of the Norfolk Society of Arts

Chrysler Museum of Art, Norfolk, Va. 42.11.1



Henry Strater

American, 1896 - 1987

Spanish Gypsy Child (Head), 1921

Paper | Ink, Overall: 14 x 19 in. (35.6 x 48.3 cm)

Gift of the Norfolk Society of the Arts

Chrysler Museum of Art, Norfolk, Va. 63.2.1A



Henry Strater

American, 1896 - 1987

Spanish Gypsy Child (Figure), 1958

Paper | Ink, Overall: 14 x 19 in. (35.6 x 48.3 cm)

Gift of the Norfolk Society of the Arts

Chrysler Museum of Art, Norfolk, Va. 63.2.1B



Henry Strater

American, 1896 - 1987

***Ruth Breton Playing*, 1958**

Paper | Ink, Overall: 14 x 19 in. (35.6 x 48.3 cm)

Gift of the Norfolk Society of the Arts

Chrysler Museum of Art, Norfolk, Va. 63.2.1C



Henry Strater

American, 1896 - 1987

***First Pose*, 1958**

Paper | Ink, Overall: 14 x 19 in. (35.6 x 48.3 cm)

Gift of the Norfolk Society of the Arts

Chrysler Museum of Art, Norfolk, Va. 63.2.1D



Henry Strater

American, 1896 - 1987

***Classic Pose*, 1958**

Paper | Ink, Overall: 14 x 19 in. (35.6 x 48.3 cm)

Gift of the Norfolk Society of the Arts

Chrysler Museum of Art, Norfolk, Va. 63.2.1E



Henry Strater

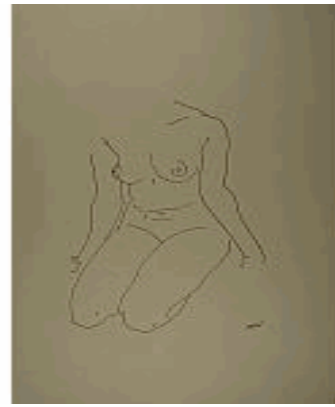
American, 1896 - 1987

***Torso*, 1958**

Paper | Ink, Overall: 14 x 19 in. (35.6 x 48.3 cm)

Gift of the Norfolk Society of the Arts

Chrysler Museum of Art, Norfolk, Va. 63.2.1F



Henry Strater

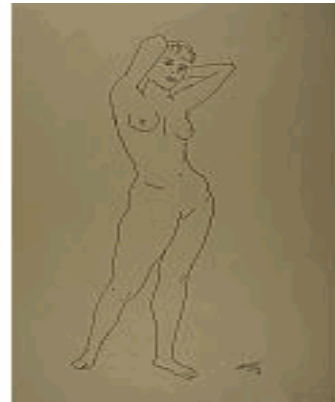
American, 1896 - 1987

***Long Waisted Girl*, 1958**

Paper | Ink, Overall: 14 x 19 in. (35.6 x 48.3 cm)

Gift of the Norfolk Society of the Arts

Chrysler Museum of Art, Norfolk, Va. 63.2.1G



Henry Strater

American, 1896 - 1987

***Turning Figure*, 1958**

Paper | Ink, Overall: 14 x 19 in. (35.6 x 48.3 cm)

Gift of the Norfolk Society of the Arts

Chrysler Museum of Art, Norfolk, Va. 63.2.1H



Henry Strater

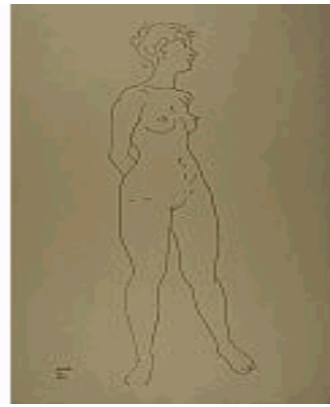
American, 1896 - 1987

***Young Girl*, 1958**

Paper | Ink, Overall: 14 x 19 in. (35.6 x 48.3 cm)

Gift of the Norfolk Society of the Arts

Chrysler Museum of Art, Norfolk, Va. 63.2.1I



Henry Strater

American, 1896 - 1987

***Farewell*, 1958**

Paper | Ink, Overall: 14 x 19 in. (35.6 x 48.3 cm)

Gift of the Norfolk Society of the Arts

Chrysler Museum of Art, Norfolk, Va. 63.2.1J



Henry Strater

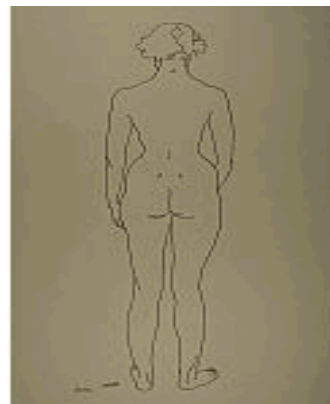
American, 1896 - 1987

***Straight Back*, 1958**

Paper | Ink, Overall: 14 x 19 in. (35.6 x 48.3 cm)

Gift of the Norfolk Society of the Arts

Chrysler Museum of Art, Norfolk, Va. 63.2.1K



Henry Strater

American, 1896 - 1987

Awakening, 1958

Paper | Ink, Overall: 14 x 19 in. (35.6 x 48.3 cm)

Gift of the Norfolk Society of the Arts

Chrysler Museum of Art, Norfolk, Va. 63.2.1L



Henry Strater

American, 1896 - 1987

Samothrace, 1958

Paper | Ink, Overall: 14 x 19 in. (35.6 x 48.3 cm)

Gift of the Norfolk Society of the Arts

Chrysler Museum of Art, Norfolk, Va. 63.2.1M



Henry Strater

American, 1896 - 1987

Alabama, 1958

Paper | Ink, Overall: 14 x 19 in. (35.6 x 48.3 cm)

Gift of the Norfolk Society of the Arts

Chrysler Museum of Art, Norfolk, Va. 63.2.1N



Henry Strater

American, 1896 - 1987

***Fire Dance*, 1958**

Paper | Ink, Overall: 14 x 19 in. (35.6 x 48.3 cm)

Gift of the Norfolk Society of the Arts

Chrysler Museum of Art, Norfolk, Va. 63.2.1O



Henry Strater

American, 1896 - 1987

***Back Perspective*, 1958**

Paper | Ink, Overall: 14 x 19 in. (35.6 x 48.3 cm)

Gift of the Norfolk Society of the Arts

Chrysler Museum of Art, Norfolk, Va. 63.2.1P



Henry Strater

American, 1896 - 1987

***Ice Accident*, 1958**

Paper | Ink, Overall: 14 x 19 in. (35.6 x 48.3 cm)

Gift of the Norfolk Society of the Arts

Chrysler Museum of Art, Norfolk, Va. 63.2.1Q



Henry Strater

American, 1896 - 1987

Adolescent, 1958

Paper | Ink, Overall: 14 x 19 in. (35.6 x 48.3 cm)

Gift of the Norfolk Society of the Arts

Chrysler Museum of Art, Norfolk, Va. 63.2.1R



Henry Strater

American, 1896 - 1987

Drapery, 1958

Paper | Ink, Overall: 14 x 19 in. (35.6 x 48.3 cm)

Gift of the Norfolk Society of the Arts

Chrysler Museum of Art, Norfolk, Va. 63.2.1S



Henry Strater

American, 1896 - 1987

Curly, 1958

Paper | Ink, Overall: 14 x 19 in. (35.6 x 48.3 cm)

Gift of the Norfolk Society of the Arts

Chrysler Museum of Art, Norfolk, Va. 63.2.1T



Henry Strater

American, 1896 - 1987

***Square Composition*, 1958**

Paper | Ink, Overall: 14 x 19 in. (35.6 x 48.3 cm)

Gift of the Norfolk Society of the Arts

Chrysler Museum of Art, Norfolk, Va. 63.2.1U



Henry Strater

American, 1896 - 1987

***Dark Eyes*, 1958**

Paper | Ink, Overall: 14 x 19 in. (35.6 x 48.3 cm)

Gift of the Norfolk Society of the Arts

Chrysler Museum of Art, Norfolk, Va. 63.2.1V



Henry Strater

American, 1896 - 1987

***International*, 1958**

Paper | Ink, Overall: 14 x 19 in. (35.6 x 48.3 cm)

Gift of the Norfolk Society of the Arts

Chrysler Museum of Art, Norfolk, Va. 63.2.1W



Henry Strater

American, 1896 - 1987

Vase, 1958

Paper | Ink, Overall: 14 x 19 in. (35.6 x 48.3 cm)

Gift of the Norfolk Society of the Arts

Chrysler Museum of Art, Norfolk, Va. 63.2.1X



Samuel F.B. Morse

American, 1791-1872

Mrs. Robert Young Hayne (Rebecca Brewton Motte Alston),

ca. 1820

Oil on canvas, Overall: 30 1/2 x 25 1/8 in. (77.5 x 63.8 cm)

Overall, Frame: 37 1/4 x 2 1/2 x 32 in. (94.6 x 6.4 x 81.3 cm)

Museum purchase and gift of Mrs. William Sloane, in memory of Margaret Bell Irvine, and of the Norfolk Society of Arts, by exchange

Chrysler Museum of Art, Norfolk, Va. 80.120



Jacob Caleb Ward

American, 1809 - 1891

View of the Natural Bridge, Virginia, ca. 1835

Oil on wood panel, 23 1/2 x 32 1/8 in. (59.7 x 81.6 cm)

Gift of the Norfolk Society of Arts in commemoration of its 100th anniversary and Museum purchase, 2017

Chrysler Museum of Art, Norfolk, Va. 2017.11

